



FIJI UPDATE

Strengthening Multi-Hazard Risk Assessment and Early Warning Systems in the Pacific Workshop

Nuku'alofa, Tonga



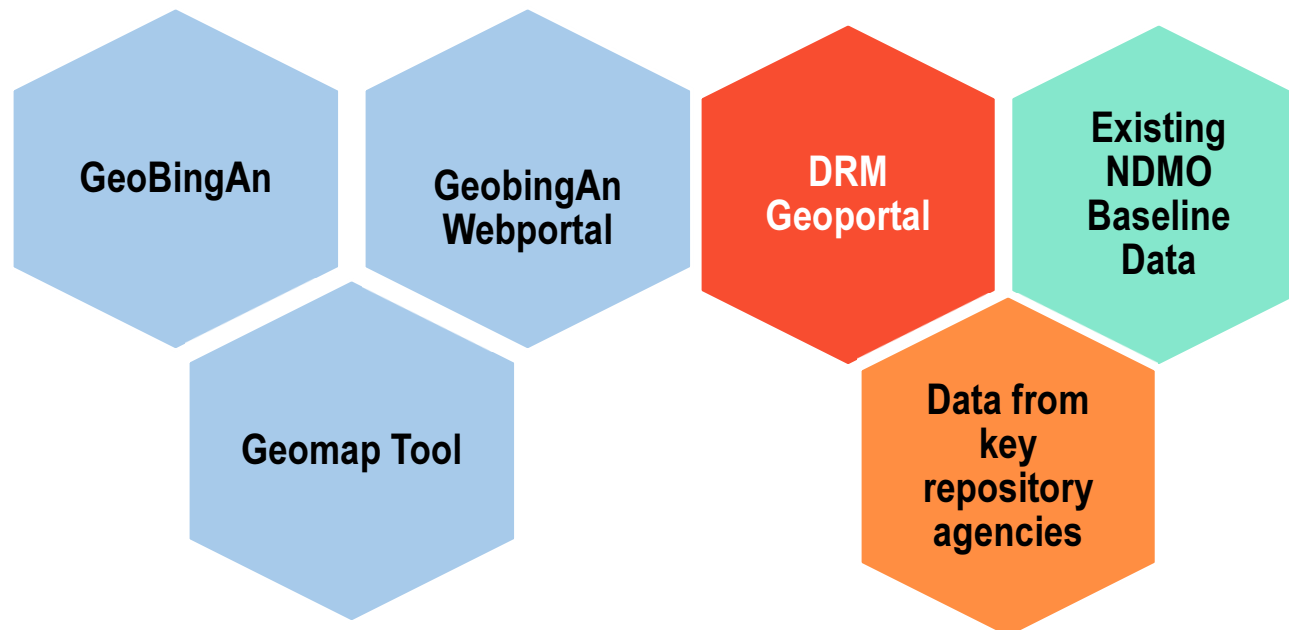
Background

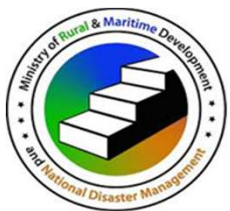


- ❑ Centralized Geospatial Platform for Disaster Risk Management
- ❑ Geo-BingAn/Geo-maptool coordinated by ADB funded by the Govt of Japan
- ❑ Establishment of a National Geoportal/ Geodatabase for DRM coordinated by UNESCAP funded by the Govt of Japan



Background

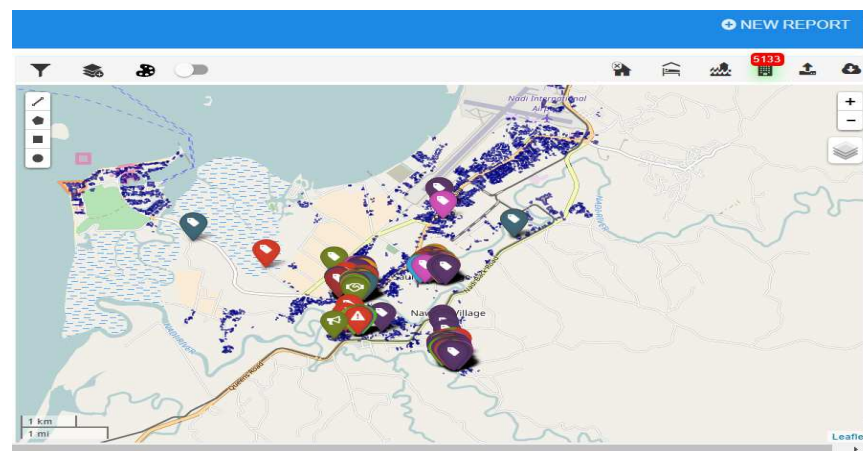
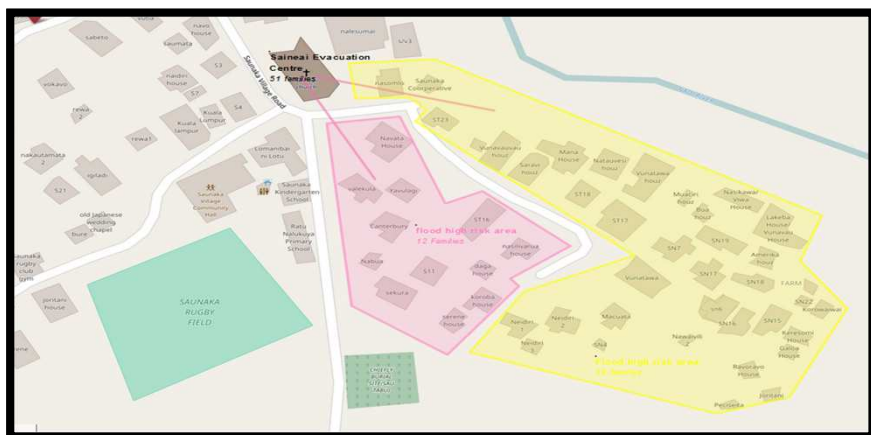
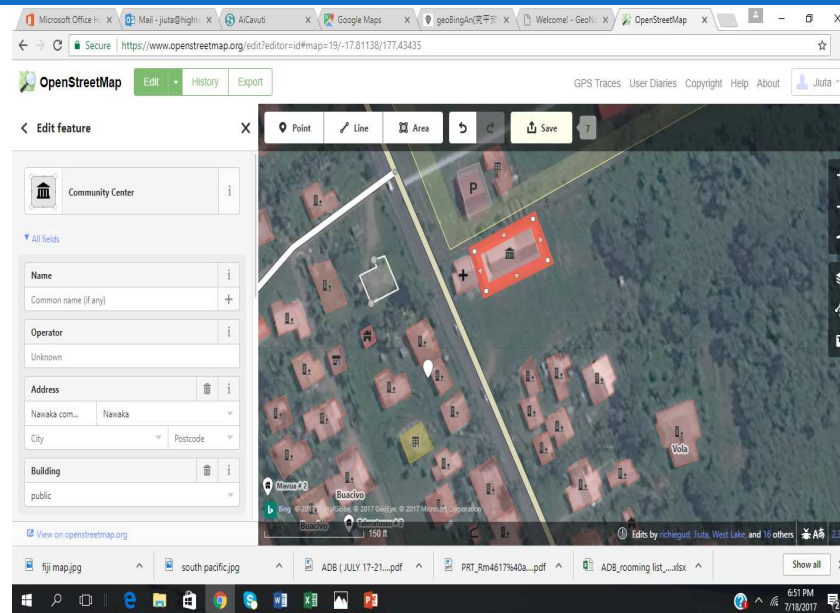




Achievements - OSM & Geomaptool



- ❑ Open Map Tool – Field Validation
- ❑ Digitizing of Building Foot Print.
 - ❑ 5000 digitized , 3000 characterized in Nadi-GeoMapTool.
- ❑ Evacuation Centres and Evacuation Routes.

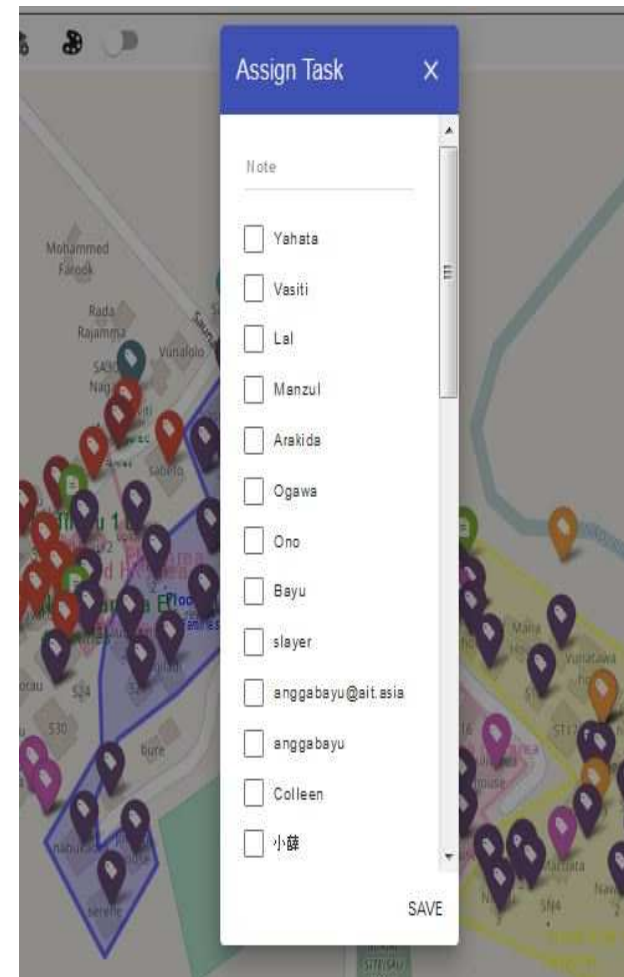




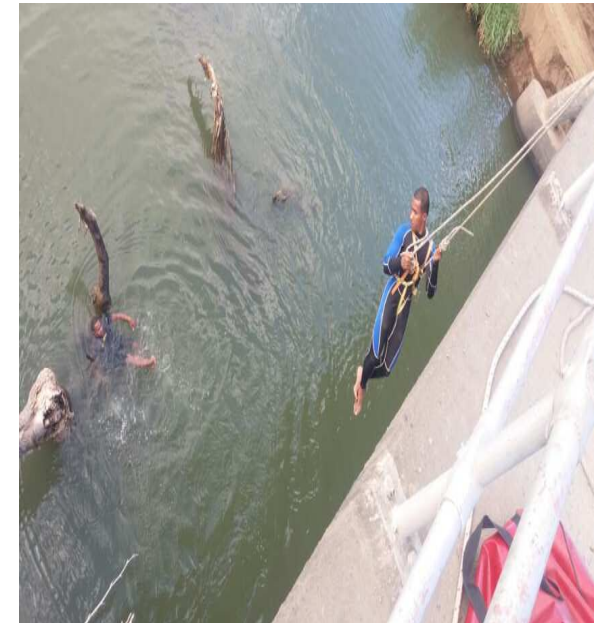
Achievements - Disaster Management



- ❑ Efficient Emergency Operations District - Nadi
- ❑ Timely response to incident report.



Achievement – Disaster Management

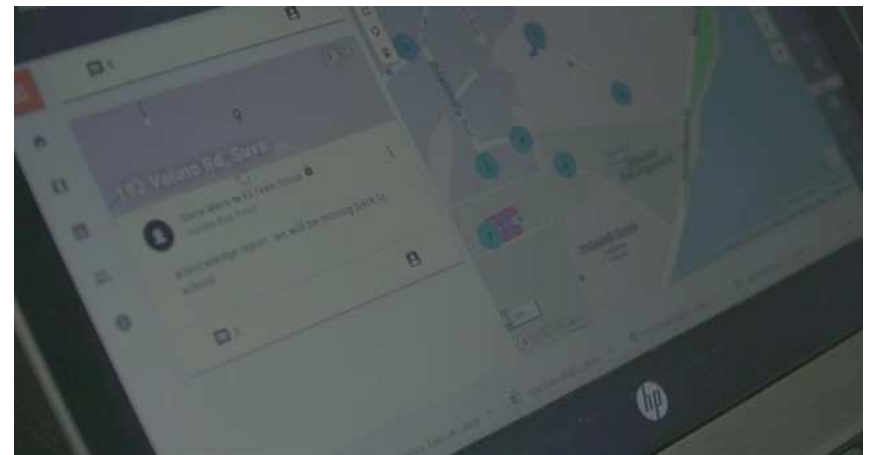
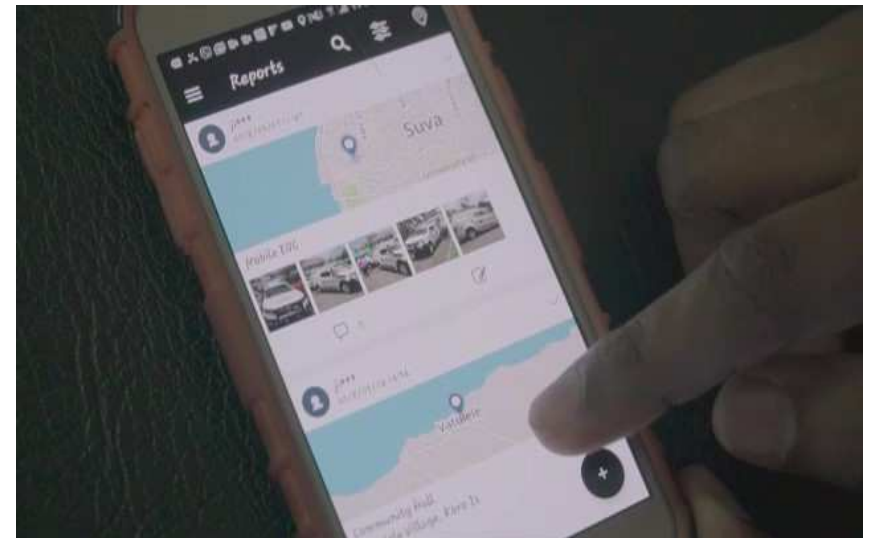




Achievements - Disaster Management



- Tsunami Drill – Schools
- Real Time Reporting.



LESSONS LEARNT

- ❑ Importance of Data Sharing
- ❑ Scale up training for familiarization of the SBT/ICT DRM tools
- ❑ Efficiency and reliability of data processing for DRM
- ❑ Digital connectivity.

SUGGESTIONS

A horizontal bar consisting of a short light blue segment on the left and a longer dark blue segment on the right.

- ❑ Timely update of OSM maps with partners - compatibility with new ICT tools.
- ❑ Ongoing training on new ICT tools.
- ❑ INTEROPERABILITY – common command system using ICT tools

Early Warning Systems

- Seasonal Tropical Cyclone Outlook
- Seasonal Climate Outlooks for Rainfall and Temperature
- 7 Day Outlook
- 3 day TC Outlook

Early Warning Systems

- Heavy Rain
- Meteorological Drought
- Flood Monitoring and forecasting
- Damaging Heavy Swells
- Storm Surge

Future Work



- Flash Flood Guidance System
- Coastal Inundation Demonstration Project
- Storm Surge Modeling



THANK YOU